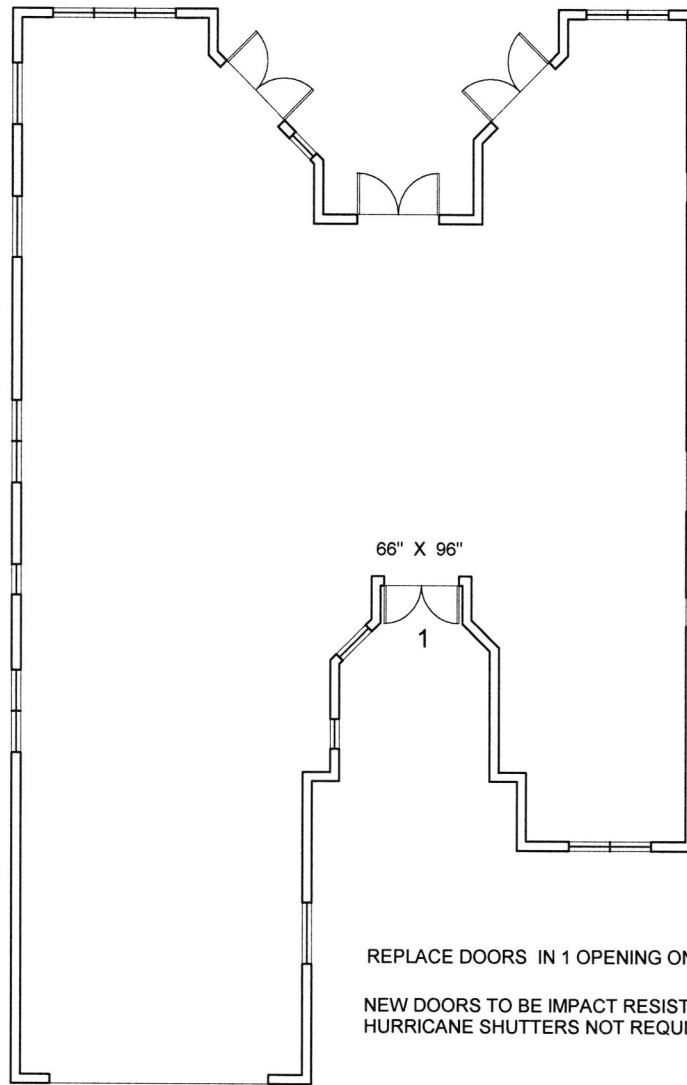


NAME : CHRISTOPHER SITE ADDRESS : 7026 NW 113 AVE PARKLAND CONTACT #: 954 294-9575

1	2	3		4		5		6		7		8		9		10	
OPENING LOCATION ID	PRODUCT ACCEPTANCE NUMBER	PRODUCT APPROVAL PRESSURE RATING		REQUIRED DESIGN PRESSURE		OPENING SIZES		ZONE LOCATION		IMPACT GLAZING		OPENING HAS EXISTING SHUTTERS		NEW SHUTTERS REQUIRED		MULLION TUBES REQUIRED	
		(+) PSF	(-) PSF	(+) PSF	(-) PSF	WIDTH X HEIGHT IN INCHES	AREA IN SQ. FEET	4 INTER	5 END	YES	NO	YES	NO	YES	NO	YES	NO
1	FL14569.3	50.0	-50.0	37.0	-40.5	66 X 96	44.0	4		YES			NO		NO		NO

IDENTIFY OPENINGS ALPHABETICALLY OR NUMERICALLY ON ELEVATION SHEETS.

IDENTIFY VERTICALLY STACKED GLASS IN THE SAME OPENINGS FROM BOTTOM TO TOP WITH SUB NUMBERS (Example:A, A1, A2, ETC.).



REPLACE DOORS IN 1 OPENING ONLY.
 NEW DOORS TO BE IMPACT RESISTANT-
 HURRICANE SHUTTERS NOT REQUIRED.

NO.	OPENING		SQ. FTG.	WIND ZONE	SPECIFIC OPENING PRESSURES (F.B.C.)		PRODUCT APPROVAL (N.O.A. #)	DESIGN PRESSURES (FROM N.O.A.)		COMMENTS
	WDTH.	HGT.			POS.	NEG.		POS.	NEG.	
1	66	96	44.00	4	37.0	-40.5	FL14569.3	50.0	-50.0	FRONT ENTRY - LSMI

REPLACE EXISTING DOORS AS DESIGNATED WITH NEW FLORIDA BUILDING CODE APPROVED DOORS.
 NO CHANGE IN SIZE. NO MODIFICATION TO OPENINGS.

ALL DOOR FRAMES TO BE ATTACHED THROUGH EXISTING BUCKS WITH MINIMUM 3/16" TAPCON SCREWS INTO CONCRETE WITH A MINIMUM 1 1/4" PENETRATION PER MANUFACTURER'S PRODUCT APPROVAL DOCUMENTS.

LESS THAN 30% OF STRUCTURE'S VALUE. NOT A RENOVATED BUILDING. EXEMPT FROM 2020 ENERGY CONSERVATION CODE.

*SEE WIND LOAD CHART ON NEXT PAGE FOR SPECIFIC OPENING PRESSURES
 DESIGN PRESSURES OF PRODUCT MEET OR EXCEED SPECIFIC OPENING PRESSURES

MEAN ROOF HEIGHT ≤ 17 FT 1 IN

CHRISTOPHER RESIDENCE
 7026 N.W. 113TH AVENUE
 PARKLAND, FLORIDA

DOOR REPLACEMENT PLAN